

DECK MOUNTS • ELECTRICAL TACHS • TACH CABLES

DECK TACH MOUNT

CAST ALUMINUM



Mounts on deck or cowling for easy visibility of tachometer. Accommodates 3 3/8" diameter tachometers. Polished aluminum.

Item No.
631

DECK GAUGE MOUNT

CAST ALUMINUM

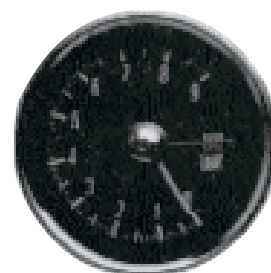


Matches our deck tachometer mount. Accommodates 2 1/16" diameter gauges. Polished aluminum.

Item No.
632

STEWART WARNER ELECTRICAL TACHOMETER

Features Zener circuitry. Has a constant voltage supply without use of battery and an easy to read 250° full sweep dial. Sturdy, one piece construction requires no sender except for application on diesel engines. 12 volt. Reads 0-8,000.



TACHOMETER CABLES

JONES TACH CABLES

STEWART WARNER TACH CABLES

Description	Item No.	Description	Item No.
6'	623	6'	53506
7'	624	7'	53507
8'	625	8'	53508
9'	626	9'	53509
10'	627	10'	53510
11'	628	11'	53511
12'	629	12'	53512

GAUGES • SENDERS

STEWART WARNER GAUGES



2-1/16" DIAMETER CASE

Stewart-Warner marine gauges have heavy duty construction internal parts for accuracy, long life and resistance to vibration, shock and extremes of temperature. Bezels are chrome plated and dials are black and white.

HOBBS HOUR METER

A must for every boat to keep accurate record of engine service hours. Electric gauge - built by Stewart-Warner. 2 1/4" dia.



Item No.
601

Description	S/W PN	Item No.
Fuel Level		
E-1/2-F (12V)	82111	987
Vacuum		
0-30" Vacuum	82117	992
Pressure		
5-80 lbs. Oil	82322	994
0-80 lbs. (12V)	82113	989
5-100 lbs. Oil	82323	995
1-10 lbs. Fuel	82319	993
Temperature		
100°-240° Water (12V)	82114	990
100°-280° Oil (12V)	82115	991
Ammeters		
60-0-60 Amperes (12V)	82108	986
Voltmeter		
10-16 Volts (12V)	82112	988

Some of the above require senders - see below.

BLOCK TEMPERATURE GAUGE

STAINLESS STEEL

Attaches directly to the engine block. Reads cylinder head or block temperature. 3/8" N.P.T. thread, 2 1/4" dia.



Item No.
602

SENDERS FOR MARINE GAUGES

WATER TEMPERATURE

Pipe Size	S/W PN	Item No.
1/8"	362-CZ-D	978
1/4"	362-AN-D	977
3/8"	362-AJ-D	976
1/2"	362-AH-D	975

OIL TEMPERATURE

1/4"	334-AA-D	997
3/8"	334-AB-D	998
1/2"	334-AD-D	999
UNIV.	280-ED-F	974

FUEL TANK (Specify left or right)

Description	S/W PN	Item No.
6"-12" depth - LH Arm	385-B	981
6"-12" depth - RH Arm	385-C	981
10"-15" depth - LH Arm	391-A	982
10"-15" depth - RH Arm	391-B	982
15 1/2"-24" depth - LH Arm	391-C	983
15 1/2"-24" depth - RH Arm	391-D	983

OIL PRESSURE

Pipe Size	Item No.
1/8"	973

