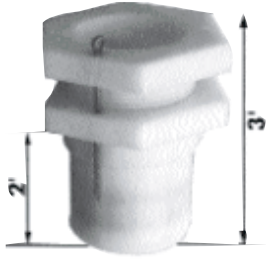


# STUFFING BOXES • BEARINGS • BEARING CAGES

## GW MORSE-TYPE STUFFING BOX



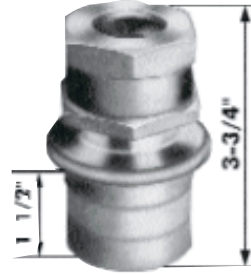
Corrosion free, pre-packed with beveled glands to force packing against shaft as it is tightened. O.D. is 1-3/4".

<b>Shaft Size</b>	<b>Item No.</b>
1"	1215**
1-1/8"	1216**

<b>Description</b>	<b>Item No.</b>
<b>Extra Packing:</b>	106 (SEE BELOW)

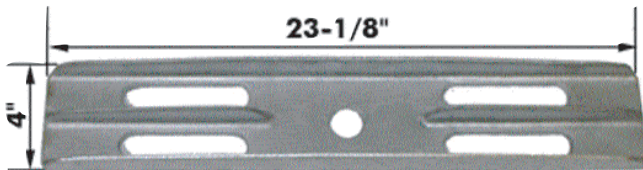
\*3/16"    \*\*5/16"    \*\*\*1/4" - Please specify when ordering

## PACKING TYPE STUFFING BOX



<b>Shaft Size</b>	<b>Item No.</b>
Bronze 1"	223***
Bronze Chrome 1"	227***
Bronze 1-1/8"	226*
Bronze Chrome 1-1/8"	230*
O.D. is 1-3/4".	

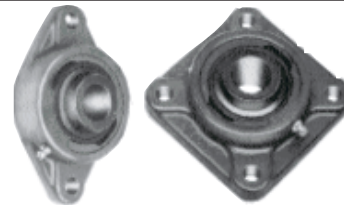
## THRUST BEARING CAGE CAST ALUMINUM



Hi-tensile cast aluminum bracket for holding the flange type thrust bearing. Fastens between engine stringers with two pieces of aluminum angle.

<b>Length</b>	<b>Width</b>	<b>Item No.</b>
23-1/2"	4-1/8"	280

## FLANGE BEARINGS



A self-aligning flange type bearing. Perfect for thrust installation on channel between engine stringers.

### TWO HOLE FLANGE BEARING

<b>Shaft Size</b>	<b>Base Size</b>	<b>Item No.</b>
1"	3 1/4" x 5 1/2"	346
1-1/8"	3 1/4" x 5 1/2"	347

### TWO OR FOUR HOLE STANDARD DUTY

PLEASE SPECIFY TWO OR FOUR HOLE

BOLT CENTER FOR 2-HOLE IS 3-7/8"

BOLT CENTER FOR 4-HOLE IS 2-3/4" SQUARE

3/4"	3" X 3"	286
1"	3 3/4" X 3 3/4"	285

### MEDIUM DUTY/STANDARD DUTY

1"	4 1/4" X 4 1/4"	288
----	-----------------	-----

# BEARINGS

## BJ MARINE BEARINGS



The resilient rubber yields to any abrasive particles which work between the shaft and the bearing, thus taking abrasive pressure off the metal shaft. These particles are rolled across the flat bearing face, deposited in the open groove, and washed out by the lubricating water. There is minimum wearing action because abrasives are never held tightly between the shaft and bearing. That is why B.J. Bearings are ideal for tough sand conditions, why they have a much longer life than other types of bearings and give maximum protection against shaft scoring under all conditions.

Type	Shaft Size	O.D.	Length	Item No.
Albacore	3/4"	1-1/4"	3"	348
Blenny	7/8"	1-1/4"	3-1/2"	349
Barracuda	7/8"	1-3/8"	3-1/2"	350
Bass	7/8"	1-1/2"	3-1/2"	351
Blackfish	1"	1-1/4"	4"	352
Bloater	1"	1-3/8"	4"	353
Bonito	1"	1-1/2"	4"	354
Broadbill	1"	1-5/8"	4"	355
Bullhead	1"	2"	4"	356
Cama	1-1/8"	1-1/2"	4-1/2"	357
Carp	1-1/8"	1-5/8"	4-1/2"	358
Catfish	1-1/8"	1-3/4"	4-1/2"	359
Chobie	1-1/8"	2"	4-1/2"	360
Chogset	1-1/4"	1-1/2"	5"	361
Chub	1-1/4"	1-3/4"	5"	362
Cod	1-1/4"	2"	5"	363
Croaker	1-1/4"	2-1/8"	5"	364
Devilfish	1-3/8"	1-7/8"	5-1/2"	365
Dogfish	1-3/8"	2"	5-1/2"	366
Dolphin	1-3/8"	2-1/8"	5-1/2"	367
Eel	1-3/8"	2-3/8"	5-1/2"	368
Flatfish	1-1/2"	2"	6"	369
Flounder	1-1/2"	2-3/8"	6"	370
Gar	1-5/8"	2-1/8"	6-1/2"	371
Grayback	1-5/8"	2-5/8"	6-1/2"	372
Grouper	1-3/4"	2-3/8"	7"	373
Haddo	1-3/4"	2-5/8"	7"	374
Hake	1-7/8"	2-5/8"	7-1/2"	375
Halibut	1-7/8"	2-15/16"	7-1/2"	376
Herring	2"	2-5/8"	8"	377
Special	1-1/8"	1-3/8"	4"	378

## MARINE BEARINGS AQUA LUBE



Water lubricated marine bearings.

Length	I.D.	O.D.	Item No.
4"	1"	1-1/4"	282
4"	1"	1-3/8"	283
4"	1-1/8"	1-3/8"	284

# CABLE STEERING PARTS

## CABLE CLAMPS



Securely fasten steering cables with these copper clamps. Provides a positive lock to to our stainless steel cable.

**Diameter**  
3/16"

**Item No.**  
340

## STEERING CHAIN



Chain is 24" in length.

**Item No.**  
385

## STAINLESS STEEL STEERING CABLE



Non-corrosive, strong steering cable. Has a high resistance to abrasion.

**Diameter**  
3/16"

**Item No.**  
338

## STEERING SHAFTS

Description	Catalog No.	Item No.
48" Steel		390
36" Stainless Steel		391
48" Stainless Steel		392

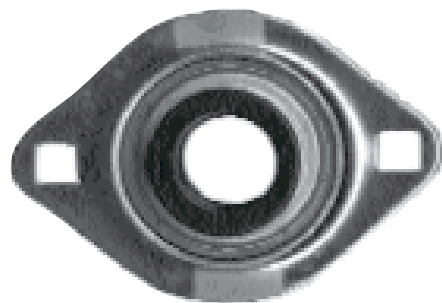
Shafts are 3/4" in diameter with a standard taper. Includes 5/8"-18 SAE standard lock nut and woodruff key.

## STEERING TURNBUCKLE



**Item No.**  
386

## STEERING BEARING



**Item No.**  
383